



Easy Read Edition

ASAN Equity Plan

**Part 11: More equity work in
ASAN's trainings, affiliates and
ACI**



More equity work in ASAN's trainings, affiliates and ACI

Every year, ASAN holds a training for autistic college students.



We call this training Autism Campus Inclusion (ACI).



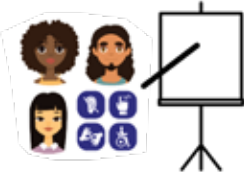
We want people who went to ACI to give us honest feedback.



We will make sure they have many ways to give us feedback.



We will make sure they can give us feedback without sharing their name.



We will keep working to bring disabled people of color to present at ACI.



We will keep working to bring students of color to ACI.



We will work with other groups to do this.



We will work with groups led by people of color.



We will work with groups that do not do autism advocacy.



We will change the way we advertise ACI.



We will use different ways to tell people about ACI.



You have to go to college in the US or Canada to go to ACI.



But you do not have to be a citizen to go to ACI.

We will make sure people know this.



We will change the materials we use in ACI.



These can be materials like:



- Presentations.



- Materials people in ACI read ahead of time.



- Discussions during ACI.



- Panels.



We will add more materials about antiracism to ACI.



We will add more materials about intersectional disability advocacy



Intersectional means thinking about all someone's identities together.

We all have many identities.



Identities are things like:



- Race.



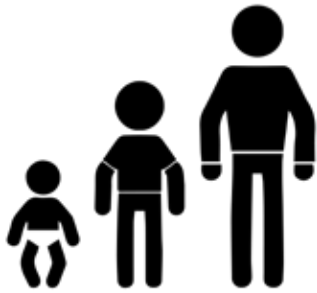
- Gender.



- Disability.



- Sexuality.



- Age.



We will hire more staff of color for ACI.



We know that having more staff of color helps students of color in ACI.



It helps them feel more welcome.

It helps them develop leadership skills.



We will look at the different parts of ACI.



We will look at how we set up ACI.



We will look at how we run ACI.



We will look at what we talk about during ACI.





We will think of ways to make these things more intersectional.



We will think of ways to make these things more equitable.



We will do this as part of the SOPs for the start and finish of ACI.



We will do this every year.



ACI is only for college and university students.

It is for students in:



- 2-year colleges (sometimes called “community colleges”).



- 4-year colleges.



- Graduate schools. A graduate school is a school you can go to after college.



- Transition and Postsecondary Programs for Students with Intellectual Disabilities, or TPSID. TPSID are programs that help students with intellectual disabilities go to college.



We know not everyone goes to college.



We know that some people don't want to go to college.



We know that some people don't have the money to go to college.



We know that some people can't go to college because colleges discriminate against them.



People of color face more barriers to getting to college than white people.



We want to also help people who don't go to college.



We will do this in several ways.



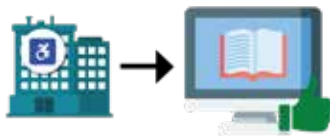
We will have an online library of self-advocacy resources.



Anyone can use the resource library!

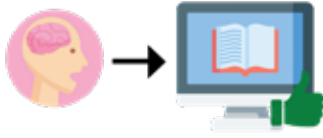


People who went to ACI can use the resource library.



People in other disability groups that ASAN works with can use the resource library.

Other people with intellectual and developmental disabilities can use the resource library.



We will add more resources to the library.



We will start doing this in 2022.



We will keep adding resources to the library all the time.



We will start holding more webinars.



Webinars are online classes.



Each webinar is on one topic.



Anyone can come to these webinars.



We will hold these webinars on different topics.



Some of the webinars will be on topics we talk about in ACI.



Holding trainings like ACI costs a lot of money.



We will look for ways to get money to hold more trainings like ACI.



We want to have trainings like ACI for people who aren't in college.